

everblue

presents...

BIG RIVER
THE ADVENTURES OF HUCKLEBERRY FINN

Music and lyrics by Roger Miller
Book by William Hauptman

BIG RIVER

THE ADVENTURES OF HUCKLEBERRY FINN

Twain's timeless and classic tale sweeps audiences down the mighty Mississippi as the irrepressible Huck Finn helps his friend Jim escape from slavery to freedom at the mouth of the Ohio River. Their adventures along the way are hilarious, suspenseful, and heartwarming, bringing to life everyone's favorite characters from the novel: the Widow Douglas and her stern sister, Miss Watson; the uproarious King and Duke, who may or may not be as harmless as they seem; Huck's partner in crime, Tom Sawyer, and their rowdy gang of pals; Huck's drunken father, the sinister Pap Finn; the lovely Mary Jane Wilkes, and Mary Jane's trusting family. Propelled by an award-winning score from Roger Miller, the king of country music, this jaunty journey provides a brilliantly theatrical celebration of pure Americana.

The story, conflicts, growth, and healing found in *Big River* remain themes and subject matters relative today still.

Tony Sanders says it best... "What *Big River* does so effortlessly is put a fully realized human face on the institution of slavery. Jim serves as the spiritual and emotional catalyst for Huck's eventual transformation and most importantly, allows the audience to bear witness to a black man with dreams, heartaches, compassion, wisdom, and triumphs. Ultimately, that level of empathy and understanding towards our fellow man is still so desperately needed within society today. It is my dream that *Big River*, at the very least starts a conversation. It is my dream that it instills hope."

This story offers so much to its audiences, and we hope you find the beauty, friendship, and healing we as a cast and team have found through the journey.

We hope you enjoy *Big River* at Everblue, the little theatre in the woods, as we take you on an immersive trip through Huck Finn's fantastic adventures!

Meet the Cast!



Rawlin Hoffman (Huck Finn) is a rising junior at Fairhope High School where he is a member of the choral ensemble and the piano lab. He enjoys traveling, playing video games, college football, and playing with his cat, Najee Harris. Rawlin thanks Everblue for this amazing opportunity!



Michael E. Martin (Jim) Chicago: Ralph/Elder in *Groundhog Day* (Paramount Theatre), Jeff Award for “Best Ensemble” as Actor 9 in *United Flight 232* (The House Theatre of Chicago), Ernest in *Kentucky* (The Gift Theatre). Regional: Chad/Guy 1 in *Just Between All of Us* (Bloomington Playwright’s Project) Audrey II in *Little Shop of Horrors*, Eddie in *Sister Act* (Rocky Mountain Repertory), Manager in *Elf* (Little Theatre on the Square), Chief/Ensemble in *Jonah*, James the Less/u/s John in *Jesus* (Sight & Sound Theatres), Kerchak in *Tarzan* (Thingamajig Theatre Company) TV: *Chicago Fire*. Oklahoma City University and Murray State University graduate. PaonessaTalent. IG: @memartinsings



Jj Haight (Duke) is thrilled to be making his return to the Everblue stage this summer. He is a graduate of Mississippi State and the University of Mobile, and he has performed with theaters across the Southeast, including Red Mountain Theatre, Opera MS, and Festival South. Some of his favorite roles include Mr. Hornsby in *Band Geeks*, Younger Brother in *Ragtime*, Nathan Detroit in *Guys and Dolls*, and Frederic in *Pirates of Penzance*.



Dustin Gonzales (King) is from San Antonio, Texas and a graduate of LSU and the University of Mobile! Dustin has performed in many productions across the Southeast such as UM’s *Spitfire Grill*, Festival South’s *The British Invasion*, and Everblue Art’s *Band Geeks*. Dustin is excited to be returning to the Everblue Art’s stage as King.



Jake Houston (Tom Sawyer) is 16 years old and will be a junior at Daphne High School this fall. He is excited and honored to be a part of the *Big River* cast at Everblue. Some of his favorite roles include Lancelot in *Spamalot*, Stewart in *Band Geeks* and Donkey in *Shrek, Jr.*



Justin Gipson (Pap Finn/Harvey Wilkes/Lafe/Silas Phelps) was born in Tomsriver, New Jersey, but has lived in southern Alabama for nearly 22 years. Justin is the choir director at Alma Bryant High School, where he has the pleasure of directing his elite ensemble, Category 6, and music directing the musical theater program. Justin is currently in his 8th year, and is poised to complete his Master’s degree in Music Education at the University of South Alabama in December.



Olivia Russell-Botto (Mary Jane Wilkes/Tart) has a diverse history of roles in the genres of musical theater and opera, with recent performances as the role of Cupid in *Orpheus in the Underworld* with Utah Vocal Arts Academy’s 2021 Summer Festival and Sergeant Sarah Brown in *Guys and Dolls*. She received her Bachelor of Music Degree at the University of Mobile, and currently studies with Professor Abigail Nims at the University of Colorado Boulder in pursuit of her Master of Music degree. Olivia is ecstatic to be performing once again with the Everblue Arts company, and is looking forward to traveling to Italy after *Big River*’s conclusion to join La Musica Lirica as a Young Artist in Puccini’s *La bohème*



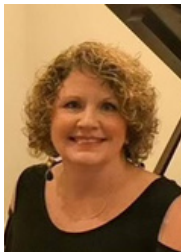
Angel Sneed (Alice) is a 2nd year Graduate Student at the University of Mobile. She is studying to gain a Master's in Vocal Performance with an emphasis in Vocal Pedagogy and Opera. Outside of singing, she loves to travel, bake desserts, and spend time with her friends and family.



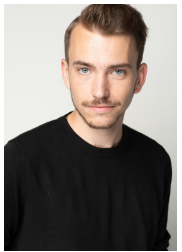
Phillip C. Savage (Mark Twain/Judge Thatcher/Raft Man) has held a variety of roles over his three and a half decades in professional and college football as a coach, scout, player personnel director, general manager, color commentator, ESPN and SiriusXManalyst and front office executive. His theatre credits include cameo appearances in *To Kill A Mockingbird*, *South Pacific*, *The Toy Shoppe*, *Sister Act*, and his voice over work in *Band Geeks*.



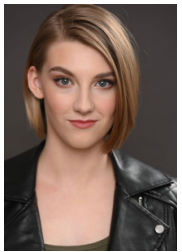
Taylor Kroop (Miss Watson/Sheriff Bell/Counselor Robinson/Tart) is thrilled to be back on the Everblue stage. Some past credits include Meg in *Little Women*, Miss Honey in *Matilda*, and Saph in *Monsters Got Talent*. She would like to thank her fiancé, Jonathan, for always being her biggest supporter throughout life.



Deirdre Antoinette Pace (Widow Douglas/Sally Phelps) AKA Ms. Dee is an accomplished vocalist and longtime resident of Fairhope, AL. She has devoted her adult life to teaching children's music in a fun and interject way to hundreds of kids in the public sector. She currently serves at First Fairhope Baptist Church music ministry, and has served as past president of ESCS and the AL Baptist Round Table. Credits include, choral performances at Carnegie Hall, *Sound of Music*, *The Christmas Carol* and numerous local pageants.



Jacob F. Morris, M.A. (Ben Rogers/Hank/Young Fool) Regional: *The Play That Goes Wrong* (FestivalSouth). Regional Directing: *The Addams Family*, *Thoroughly Modern Millie*, *CLUE*. Artistic Director at Bay Area Performing Arts, LLC. @_jacob_morris_



Emryn Rowley (Dick/Andy) is a professional performer from Fairhope, AL. Emryn's passion for theater stems from her love of being able to impact people emotionally through her performance. Some of Emryn's favorite roles include playing Natalia Vosavich in *Band Geeks*, and Millie from *Thoroughly Modern Millie*.



Dave B. Bireline (Doctor) has worked as an intercollegiate basketball coach and longtime director of athletics. He is currently serving as an associate professor of sport management in the Cook School of Business at Columbia International University in Columbia, South Carolina.



Ashlyn Rowley (Strange Woman/Tart) is a young, bicoastal, American actress with a passion for all things creative. From her love of live theater, to her entrepreneurship with both hand-sewn dolls and designer macarons, Ashlyn loves to express herself with art. Ashlyn fiercely pursues her professional career by regularly auditioning for both regional and professional local theater, as well as training weekly in the fields of voice, acting, dance, and visual art.



Aidan Bellerjeau (Simon/Tart) Hey friends, my name is Aidan Bellerjeau! I'm a south Alabama native who is currently living between Alabama and working in Nashville! Five things to know about me: I love Jesus, I am a coffee connoisseur, I've danced for 7 years and consider it a passion, I love the color green and once I fed a chicken chicken... don't ask.



Dru Bramblett (Jo Harper/Joanna Wilkes/Tart) has been a member of the Everblue resident company from its inception, and has been training in acting, singing and dancing since she was 8. Film; (Muti) Jessie Boyd, (Jesus revolution) student athlete, (California Dreamin) high school student; professional theatre; upcoming; Off-Broadway KOTA; Disney's Camp Rock (Caitlyn Geller); Everblue Arts; Little Women (Amy), Band Geeks (Swing); Expect Excellence, The Addams Family (Wednesday Addams).
Colossians 3:23



Lily Lumpkin (Susan Wilkes/Ensemble) is a Fairhope, Alabama native and a student at Bayside Academy. Growing up in the arts and entertainment world, Lily has appeared in movies, musicals and plays since she was 2 years old. Her most recent performance with Everblue Arts was their Summer Soirée where Lily sang "Home" from Alice in Wonderland and "Gimme Gimme" from Thoroughly Modern Millie.



Ava Hedge (Ensemble/Chorus) is a 17 year old upcoming senior at Fairhope High School. She's a member of the FHS Dance Collective, as well as a student at Bay Area Performing Arts in Daphne, Alabama. She has been a part of numerous shows at BAPA and has served as choreographer for many younger student shows.



Tyler N. Allen (Slave Chorus) is the second oldest of 6 kids and one of the youngest Elders in his church. Elder Tyler loves to travel, sing, and cook in his spare time. He is married to Dajha Janae Harper Allen. He was also was featured on American Idol.



Kenneth Brandon (Slave Chorus) Originally from Jackson, MS, Kenneth Brandon has been living in Mobile, AL with his Queen, Girlfriend, and "Wifey4Lifey," Pamela, for the past seven years. An unapologetic worshiper, his desire is to help people encounter God musically. He loves good music, good food, and the entire Marvel Cinematic Universe.



Pamela Brandon (Slave Chorus) is a native of Kansas City, KS, and has been residing in Mobile, AL with her husband, Kenneth, for the past seven years. She has been singing her entire life and is passionate about her relationship with the Lord. Her life verse is Psalm 91. She loves her family, a good movie, and a traditional banana split.



Angel Molette (Slave Chorus) is a music teacher at ACCEL DAY AND EVENING ACADEMY, the first charter school in Alabama. She is owner of With a Song Music Consults, a worship leader in her local assembly, and a recording artist and author. She is the mother of Phara, Joshua, Rachael, Daniel, and David, and the GLAM-ma of Kyland Alexander.

Meet the Team!



Dorothy Savage (Producing Artistic Director) is the founder and Artistic Director of Everblue Arts. Dorothy is also a professional actor, vocal and acting coach, recording artist, and executive producer of over 20 projects, and counting. Dorothy is a proud member of Actors Equity, and is thrilled to be a part of bringing *Big River* to audiences in the South. Dorothy is wife to Phillip Savage Jr. , and mother to Honor Blue Savage and Ever Brave Savage, which she counts as, by far, her greatest honor and accomplishment.



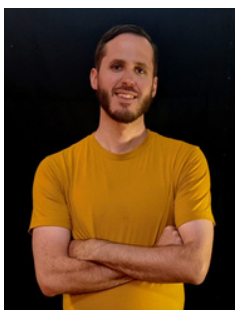
Jessica Medoff (Director) is thrilled to be directing her second production at Everblue Arts. Jessica is both a performer and director, from New York City, where she lives with her husband, Chris Jobe, her 7-year-old son, Henry, and their cat, Leone. Jessica has performed in every medium from opera, to film and television, to hundreds of musical theatre productions and plays. Jessica truly is most happy when she is immersed in the arts, and is honored to be directing this production of *Big River* at a time when messages of equality and love for one another are needed more than ever.



Adam King (Music Director) is the resident music director for Everblue Arts. He has been a part of every main stage production at Everblue since its inception. He has worked all over the country as an accomplished pianist, organist, and music director. He received a Master of Music from Stamford University, and he is a member of the Local 802- Associated Musicians of Greater New York, Music Teacher's National Association, and the American Guild of Organists. He also travels with a New York City based performing group "Shades of Buble" serving as the Production Manager, Conductor, and pianist. He currently resides in New York City.



Olivia J. Vaughn (Stage Manager) is an actress from Decatur, Mississippi. She has a Bachelor's of Music and Master's of Arts, both in Musical Theater. She has worked as a vocal, dance, and theatre instructor. Though Olivia is an experienced performer with over 30 productions under her belt, she has recently discovered a love for being on the other side of the curtain for theatre! This is her 4th production as stage manager, and she has fallen in love with it! She is so immensely proud of the cast, and she wishes she could be here in person for the performances. "I love all of you and could not be prouder of the work you have done!"



Baron Leon (Lighting Designer/Operator) is the owner of Artisan Lighting. He is currently working towards his MFA in Lighting Design at the University of Cincinnati CCM. Previous shows with Everblue include *Band Geeks* and *The Last 5 Years*.



Derrick Gainey (Sound Designer/Operator) owns Gulf Pro Media, where he provides sound production for theater, music, film, television, and all forms of performance. His passion for storytelling, attention to detail, and team player approach make him a valuable asset.



Jordan Bennett (Musician/Guitarist) is a guitarist and violist from Gulfport, Mississippi. He is a senior at the University of Mobile and is studying Worship Leadership. Jordan has previously performed in the rhythm section for productions of *Daddy Long Legs* and *Into the Woods*.



Amanda Donald (Musician/Violinist) is a multi-instrumentalist and singer/songwriter local to the Eastern Shore Area. She enjoys playing mandolin and fiddle to accompany other singer/songwriters, as well as playing guitar and singing her own songs. She is working on a full-length, all-original solo album which should be released by the end of the year.
www.amadonald.com



Timothy Beattie (Musician/Drummer) is a graduate of the University of South Alabama (Bachelor of Science in Music Education), and Troy University (Masters of Science in Music Industry), and LSU (PhD in Music Composition). Timothy has devoted his talent and experience towards being an active performer, instructor, researcher, and conductor. His favorite musical to perform has been *Thoroughly Modern Millie*.

Enjoy the show!